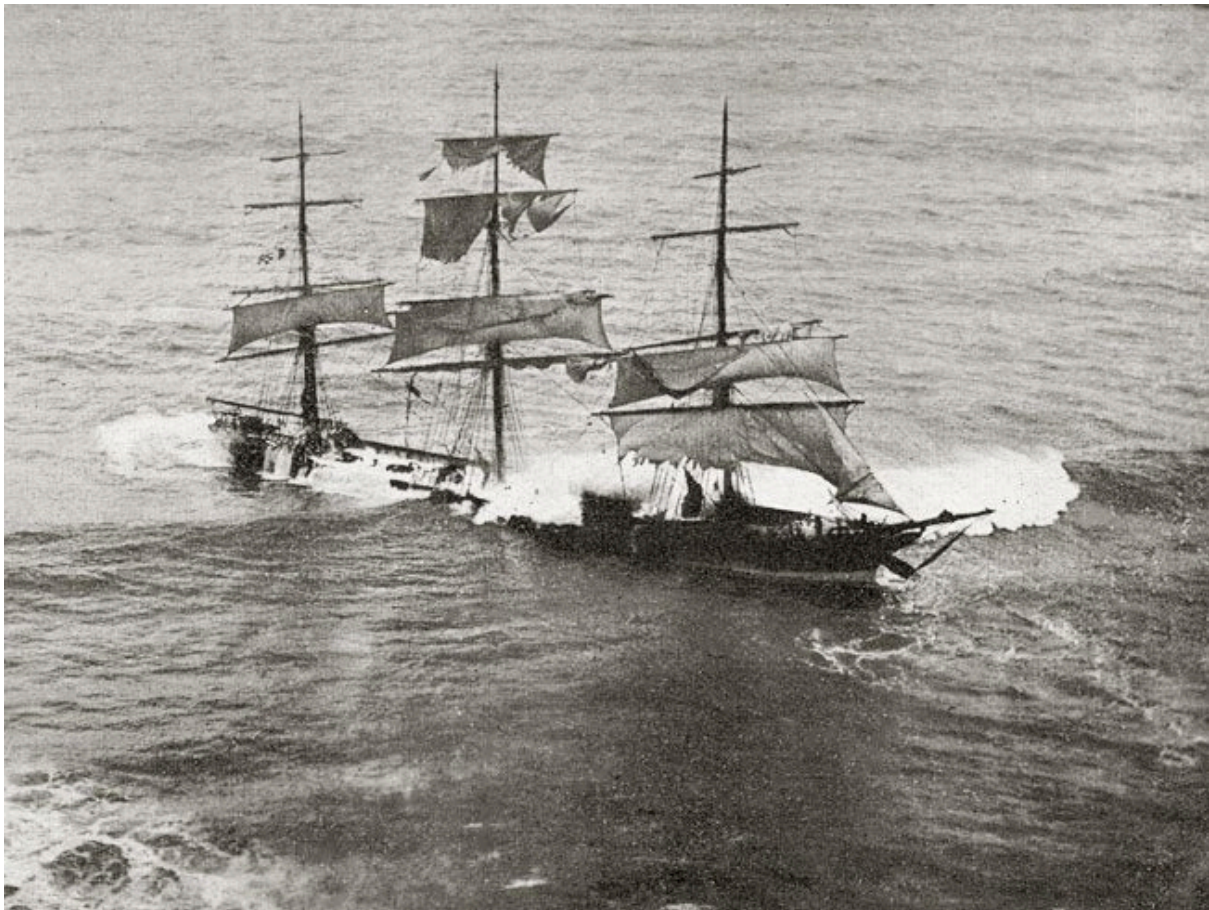


Irex Wrecked at the Needles, Isle of Wight, 25th January 1890. 29 Saved, 7 Perished.

Irex was built by J. Reid & Co. of Port Glasgow, and launched on 10 October 1889. The 2,348 gross register tons (GRT) steel-hulled three-masted ship was 302 ft. 2 in (92.10 m) long, and 43 ft. (13 m) in the beam.

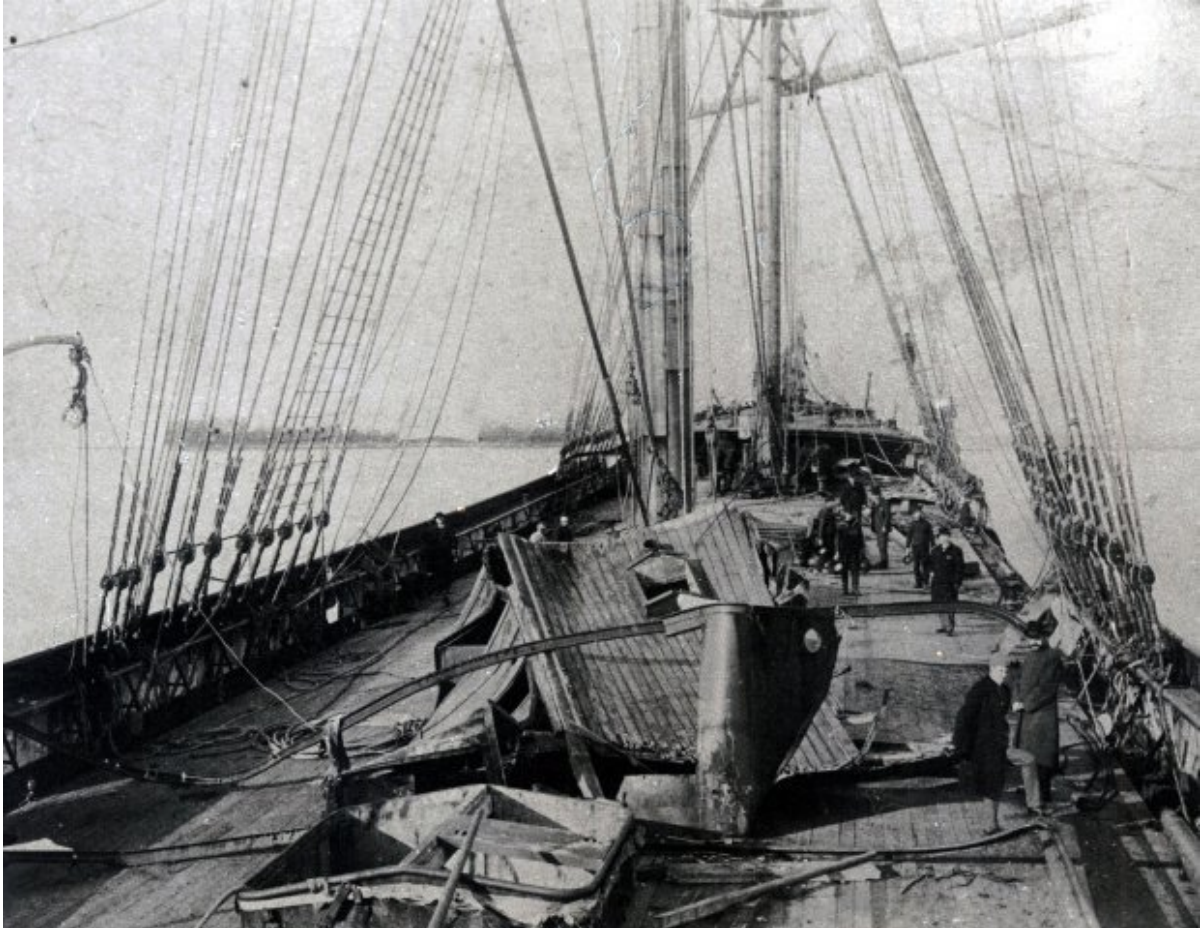
On 24 December 1889 *Irex* sailed from Greenock, bound for Rio de Janeiro, under the command of Captain Hutton, carrying a cargo of 3,600 tons of iron sewerage pipes.

However, storms meant that she was obliged to shelter in Belfast Lough until 1 January 1890. She sailed again, but the winds reached hurricane strength, and she attempted to take shelter in Falmouth on the 24th, but was unable to get a pilot boat to guide her in, so continued up the English Channel towards Portland. As *Irex* approached the Needles, Hutton mistook the Needles Lighthouse for a light from a pilot boat, and drove his ship up onto the shore at about 10 p.m.



Large waves broke over the ship, and the Captain, First Mate, Boatswain and a crewman were killed. At 9 a.m. *Irex* was seen by soldiers stationed at The Needles Batteries who alerted the Totland lifeboat. The steam colliers *Hampshire* also went to the aid of *Irex*, but neither ship were able to approach *Irex* before mid-day. After nearly being smashed into *Hampshire*, the lifeboat abandoned the attempt to rescue the crew, and was towed back to port by *Hampshire*.

At 1.15 p.m. the Coastguard launched a rocket from the battery, taking a line, which caught in the rigging. As the crew attempted to reach the line, one man fell and was killed. It took them two hours to secure a hawser, which enabled the 29 survivors from the crew of 36 to be winched by breeches buoy from the ship to the cliff-top.



Photograph Taken on Board the Irex at the Needles.

THE ILLUSTRATED LONDON NEWS

No. 2651.—VOL. XCVI.

SATURDAY, FEBRUARY 8, 1890.

WITH SIXPENCE
EXTRA SUPPLEMENT 37 From 1890.



WRECK OF THE 'IREX' AT THE NEEDLES, ISLE OF WIGHT. REMAINS OF THE CREW.

References

1. ["SV Irex"](#). Clyde-built Ship Database. Archived from the original on 26 August 2014. Retrieved 14 December 2012.
2. ["Isle of Wight Shipwrecks: 'Sirenia' and 'Irex'"](#).
3. ["WRECK OF A LARGE SAILING SHIP NEAR THE NEEDLES"](#). Isle of Wight County Press. 1 February 1890.